

DIRC2 Antibody (Center)
Affinity Purified Rabbit Polyclonal Antibody (Pab)
Catalog # AP20100c**Specification**

DIRC2 Antibody (Center) - Product Information

Application	WB,E
Primary Accession	O96SL1
Other Accession	O8BFQ6 , NP_116228.1
Reactivity	Human
Predicted	Mouse
Host	Rabbit
Clonality	Polyclonal
Isotype	Rabbit IgG
Calculated MW	52088
Antigen Region	202-229

DIRC2 Antibody (Center) - Additional Information**Gene ID** 84925**Other Names**

Disrupted in renal carcinoma protein 2, Disrupted in renal cancer protein 2, DIRC2

Target/Specificity

This DIRC2 antibody is generated from rabbits immunized with a KLH conjugated synthetic peptide between 202-229 amino acids from the Central region of human DIRC2.

Dilution

WB~~1:1000

E~~Use at an assay dependent concentration.

Format

Purified polyclonal antibody supplied in PBS with 0.09% (W/V) sodium azide. This antibody is purified through a protein A column, followed by peptide affinity purification.

Storage

Maintain refrigerated at 2-8°C for up to 2 weeks. For long term storage store at -20°C in small aliquots to prevent freeze-thaw cycles.

Precautions

DIRC2 Antibody (Center) is for research use only and not for use in diagnostic or therapeutic procedures.

DIRC2 Antibody (Center) - Protein Information**Name** SLC49A4 ([HGNC:16628](#))

Function Mediates H(+)-dependent pyridoxine transport.

Cellular Location

Lysosome membrane; Multi-pass membrane protein

Tissue Location

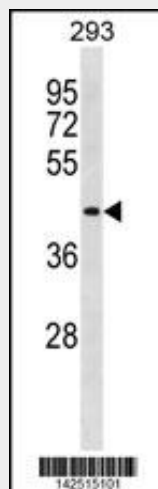
Ubiquitous. Expressed in proximal tubular cells of the kidney. Highly expressed in the placenta, brain and heart

DIRC2 Antibody (Center) - Protocols

Provided below are standard protocols that you may find useful for product applications.

- [Western Blot](#)
- [Blocking Peptides](#)
- [Dot Blot](#)
- [Immunohistochemistry](#)
- [Immunofluorescence](#)
- [Immunoprecipitation](#)
- [Flow Cytometry](#)
- [Cell Culture](#)

DIRC2 Antibody (Center) - Images



DIRC2 Antibody (Center) (Cat. #AP20100c) western blot analysis in 293 cell line lysates (35ug/lane). This demonstrates the DIRC2 antibody detected the DIRC2 protein (arrow).

DIRC2 Antibody (Center) - Background

This gene encodes a membrane-bound protein from the major facilitator superfamily of transporters. Disruption of this gene by translocation has been associated with haplo-insufficiency and renal cell carcinomas. Alternatively spliced transcript variants have been described, but their biological validity has not yet been determined.

DIRC2 Antibody (Center) - References

Bodmer, D., et al. Cancer Genet. Cytogenet. 136(2):95-100(2002)

Bodmer, D., et al. Hum. Mol. Genet. 11(6):641-649(2002)